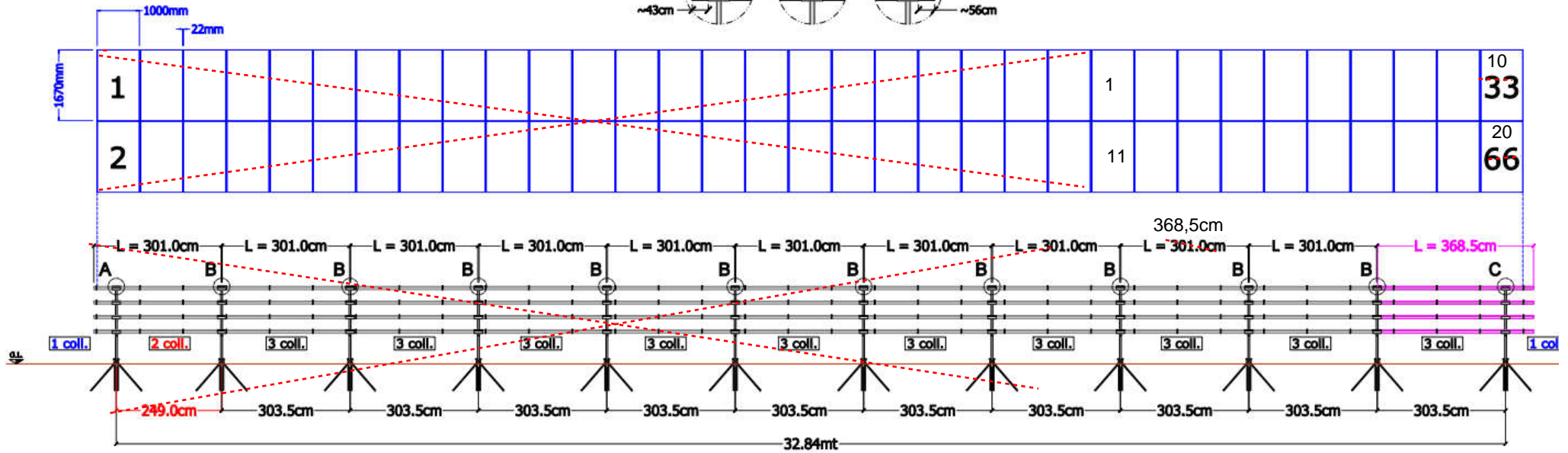
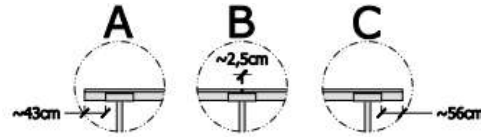


20 paneeli süsteem



For each rack, it is required:

- 12 FRAMEWORKS 35°;
- 40 PURLINS L=301cm;
- 4 PURLINS L=368.5cm;
- 136 COLLARS.

DO NOT CUT THE HORIZONTAL PROFILES FOR ANY REASONS, SINCE THEY ARE ALREADY CUT ON SIZE.

10+10

Tipology of rack: 33+33
Number of racks: 6

- 4 raami
- 4 tala 301cm
- 8 tala 368,5 cm
- 24 kollarit
- 24 polti
- 24 mutrit
- 8 otsaklambrit
- 16 vaheklambrit
- 96 puurkruvi
- 16 lühikest vaia
- 16 pikka vaia